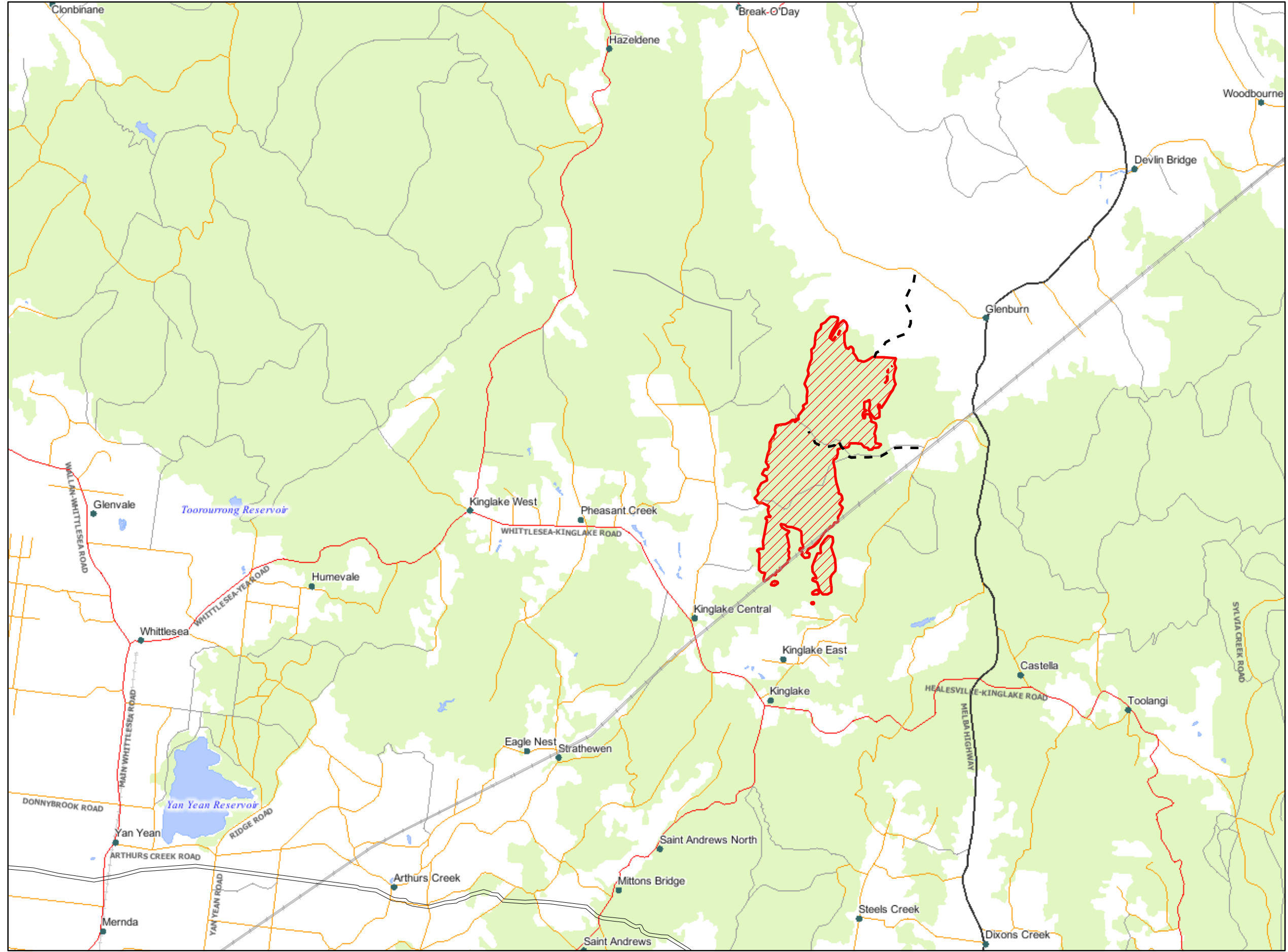


approx area = 1000 ha
approx perimeter = 22.4 km
Figures calculated using data
based on linescan from 1950 20060126

 Burnt Area



Disclaimer: This map is a snapshot generated from Victorian Government data. This material may be of assistance to you but the State of Victoria does not guarantee that the publication is without flaw of any kind or is wholly appropriate for your particular purposes and therefore disclaims all liability for error, loss or damage which may arise from reliance upon it. All persons accessing this information should make appropriate enquiries to assess the currency of the data.

Produced on Fri Jan 27 07:29:12 EST 2006

Map Scale 1:121,213
NOT FOR NAVIGATION

