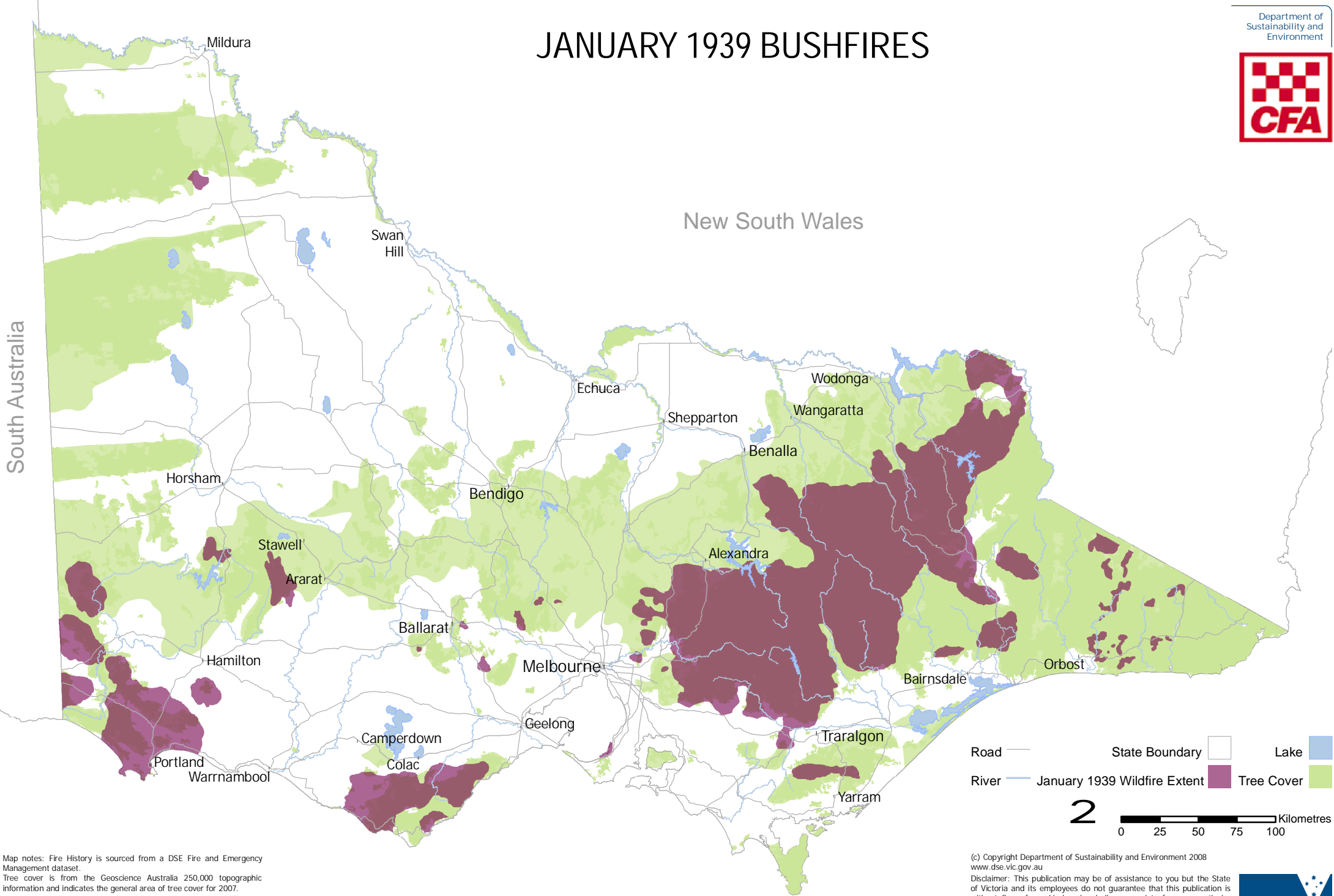




JANUARY 1939 BUSHFIRES

South Australia

New South Wales



Road — State Boundary — Lake —
 River — January 1939 Wildfire Extent — Tree Cover —

2
 0 25 50 75 100 Kilometres

Map notes: Fire History is sourced from a DSE Fire and Emergency Management dataset. Tree cover is from the Geoscience Australia 250,000 topographic information and indicates the general area of tree cover for 2007.

(c) Copyright Department of Sustainability and Environment 2008
www.dse.vic.gov.au
Disclaimer: This publication may be of assistance to you but the State of Victoria and its employees do not guarantee that this publication is without flaw of any kind or is wholly appropriate for your particular purposes and therefore disclaims all liability for any error, loss or other consequence which may arise from you relying on any information in this publication.
Created by Fire Information Systems Group 23/12/2008

